



**Fall Enrollment Trends  
Through 2006**

---

# CONTENTS

	<b>Page</b>
<a href="#"><u>Fall Student Enrollment Snapshot</u></a>	1
<a href="#"><u>Employee Profile</u></a>	2
<a href="#"><u>20 Year Fall Enrollment Trend</u></a>	3
<a href="#"><u>Gender</u></a>	4
<a href="#"><u>Day/Evening</u></a>	5
<a href="#"><u>Age</u></a>	6
<a href="#"><u>Degrees and Certificates Awarded</u></a>	7
<a href="#"><u>Entrance Level</u></a>	8
<a href="#"><u>Highest Degree Held</u></a>	9
<a href="#"><u>Enrollment Status</u></a>	10
<a href="#"><u>Ethnicity</u></a>	11

## Fall 2006 Student Enrollment Snapshot

(as of Saturday at the End of the Second Week)

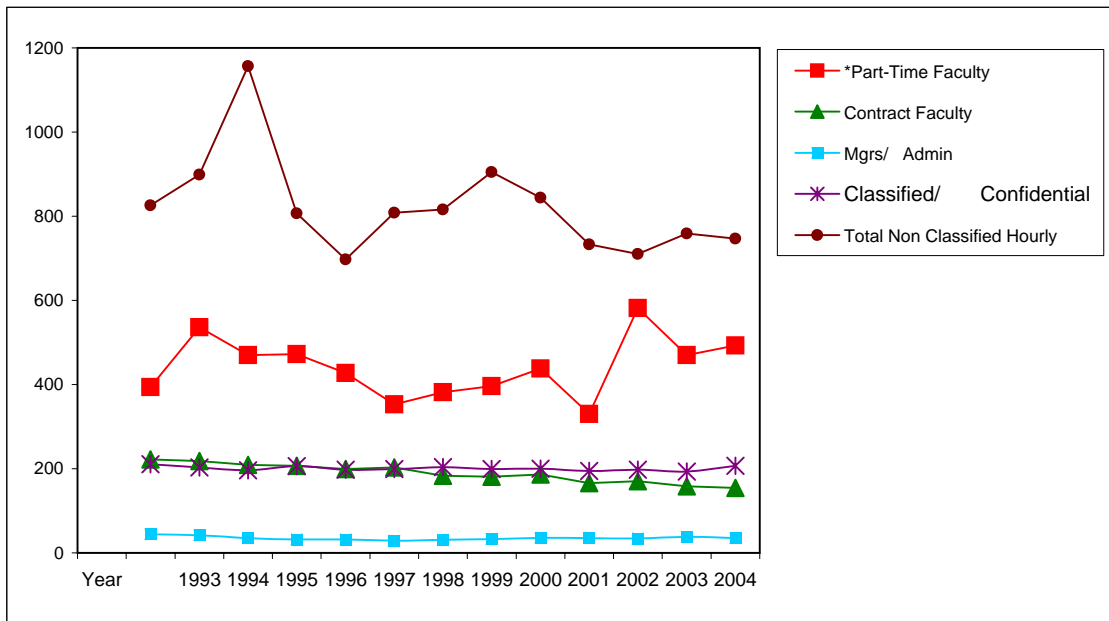
	Count	%
<b>Total</b>	12,944	100.0%
<b>GENDER</b>		
Male	5,905	45.6%
Female	7,039	54.4%
<b>TIME OF DAY</b>		
Day Only	4,155	32.1%
Evening Only	2,516	19.4%
Day and Evening	6,273	48.5%
<b>AGE</b>		
Under 21	5,219	40.3%
21-24	3,160	24.4%
25-30	1,701	13.1%
31-40	1,304	10.1%
41-50	873	6.7%
51-54	214	1.7%
55+	473	3.7%
<b>EDUCATIONAL GOAL</b>		
Transfer	2,370	18.3%
AA degree	5,195	40.1%
AA Voc	138	1.1%
AA Gen Ed	635	4.9%
Certificate	375	2.9%
Job skills	536	4.1%
HS credit	63	0.5%
Personal	656	5.1%
Undecided	1,872	14.5%
Unreported	126	1.0%
Disc Career	279	2.2%
Career Advnc	336	2.6%
Basic skills	246	1.9%
Mait. Cert.	117	0.9%
<b>DISTANCE LEARNING (DL)</b>		
Taking one DL Class	1,501	11.6%
Taking Two DL Classes	290	2.2%
Three or More	68	0.5%
Total DL Students	1,859	14.4%
Total DL Enrollments	2,304	
<b>Hold BA Degree or Higher</b>	1,328	10.3%

	Count	%
<b>Total</b>	12,944	100.0%
<b>HIGH SCHOOL GRADUATE</b>		
Graduate	10,341	79.9%
GED	452	3.5%
Cert of Equiv	3	0.0%
Prof Exam	122	0.9%
Cert Comp	2	0.0%
Foreign Secondary	960	7.4%
Non Graduate	376	2.9%
Unknown	688	5.3%
<b>ATTEND ANOTHER COLLEGE</b>		
Yes	7,344	56.7%
No	5,600	43.3%
<b>UNIT LOAD THIS SEMESTER</b>		
0.1-5.9	4,260	32.9%
6.0-11.9	4,121	31.8%
12.0-18.9	4,470	34.5%
19+	54	0.4%
NC only	39	0.3%
<b>UNITS COMPLETED, NO DEGREE</b>		
0-15 units	5,656	43.7%
15.1-30	1,867	14.4%
30.1-45	1,283	9.9%
45.1-60	970	7.5%
60+	1,149	8.9%
<b>ENROLLMENT STATUS</b>		
First Time	4,538	35.1%
Continuing	6,416	49.6%
Returning	1,795	13.9%
Transfer	20	0.2%
High School	0	0.0%
	175	
<b>SUMMARY</b>		
Asian	3,781	29.2%
Black	225	1.7%
Filipino	357	2.8%
Hispanic	2,109	16.3%
Amer Ind	147	1.1%
Pac Islander	95	0.7%
White	5,208	40.2%
Other/Unknown	1,022	7.9%

Last updated: 2006/9/18

### GWC Employee Census

The 'Total Non Classified' group has experienced the most change, with an all-time peak in 1995, followed by two years of severe decline. Their numbers peaked again in 2000 and have since been declining. The numbers of 'Part-Time Faculty' spiked in 2001-02 and have returned to prior levels with recent retirement incentives for contract faculty and the subsequent round of new-hires. The numbers of 'Classified/Confidential' have varied slightly over eleven years and have been relatively steady. The numbers of 'Contract faculty' have declined steadily since 1993. The number of 'Managers' and 'Contract Faculty' have declined significantly.



Year	*Part-Time Faculty	Contract Faculty	Mgrs/ Admin	Classified/ Confidential	Non Classified Hourly			Total Non Classified Hourly	Total
					160 Day	Student	**Prof. Experts		
1993	394	222	44	211	532	293	1	826	1,697
1994	536	218	42	203	500	245	154	899	1,898
1995	470	209	35	196	692	272	193	1,157	2,067
1996	472	207	32	206	464	177	166	807	1,724
1997	427	199	32	198	410	205	82	697	1,553
1998	353	203	29	199	504	198	106	808	1,592
1999	382	183	31	204	568	206	42	816	1,616
2000	396	181	33	199	640	214	51	905	1,714
2001	438	186	36	200	605	196	43	844	1,704
2002	330	166	35	195	449	231	53	733	1,459
2003	582	170	34	198	412	243	55	710	1,694
2004	470	158	38	193	416	300	43	759	1,618
2005	493	154	35	207	372	318	57	747	1,636

*\*Part-Time Faculty census is inclusive of Police Academy.*

*\*\*Professional Experts are formerly independent contractors and Community Service presenters.*

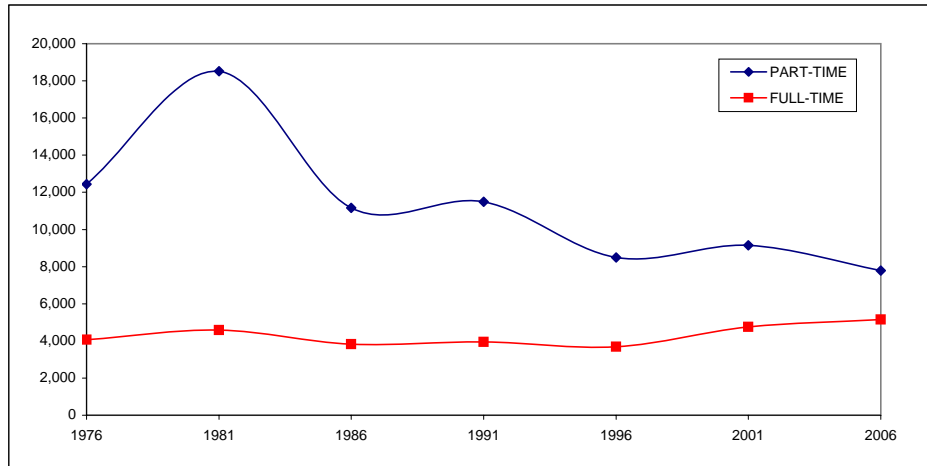
*Last updated: 2006/9/18*

### GWC Fall Enrollment History

(as of Saturday at the End of the Second Week)

**Summary of trend:**

Enrollments grew rapidly during the seventies and peaked in the early eighties. After the 'Black List' came out in the early eighties, enrollment declined rapidly, flattened out in the late eighties, and declined again in the early nineties. We are currently experiencing a flattening out period with a trend toward slow growth.



	1976	1981	1986	1991	1996	2001	2006
PART-TIME	75.4%	80.2%	74.5%	74.4%	69.8%	65.8%	60.2%
FULL-TIME	24.6%	19.8%	25.5%	25.6%	30.2%	34.2%	39.8%
TOTAL	100.0%	100.0%	100.0%	100.0%	100.0%	100.0%	100.0%

	1976	1981	1986	1991	1996	2001	2006
PART-TIME	12,432	18,522	11,158	11,488	8,497	9,145	7,790
FULL-TIME	4,058	4,579	3,821	3,951	3,680	4,749	5,154
TOTAL	16,490	23,101	14,979	15,439	12,177	13,894	12,944

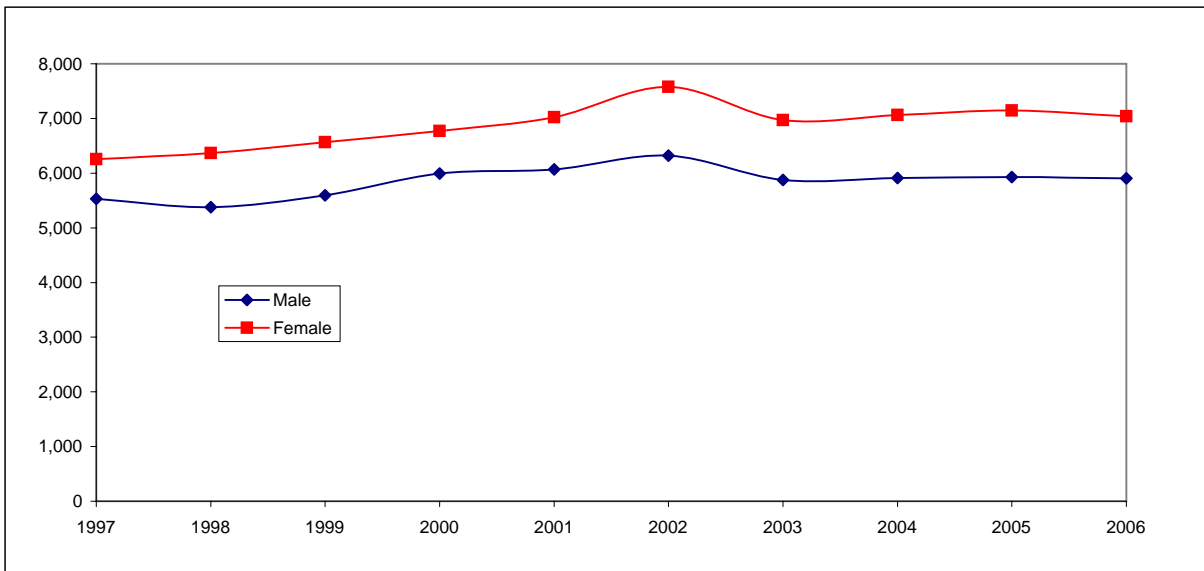
Last updated: 2006/9/18

### GWC Fall Enrollment by Gender

(as of Saturday at the End of the Second Week)

Summary of enrollment by gender:

GWC has maintained a slightly higher proportion of women over men. This trend has remained with only slight variations over the last ten years.



	1997	1998	1999	2000	2001	2002	2003	2004	2005	2006
Male	46.9%	45.8%	46.0%	47.0%	46.4%	45.5%	45.7%	45.6%	45.3%	45.6%
Female	53.1%	54.2%	54.0%	53.0%	53.6%	54.5%	54.3%	54.4%	54.7%	54.4%
Total	100.0%	100.0%	100.0%	100.0%	100.0%	100.0%	100.0%	100.0%	100.0%	100.0%

	1997	1998	1999	2000	2001	2002	2003	2004	2005	2006
Male	5,531	5,377	5,592	5,992	6,070	6,318	5,878	5,909	5,928	5,905
Female	6,256	6,365	6,568	6,770	7,021	7,576	6,972	7,061	7,145	7,039
Total	11,787	11,742	12,160	12,762	13,091	13,894	12,850	12,970	13,073	12,944

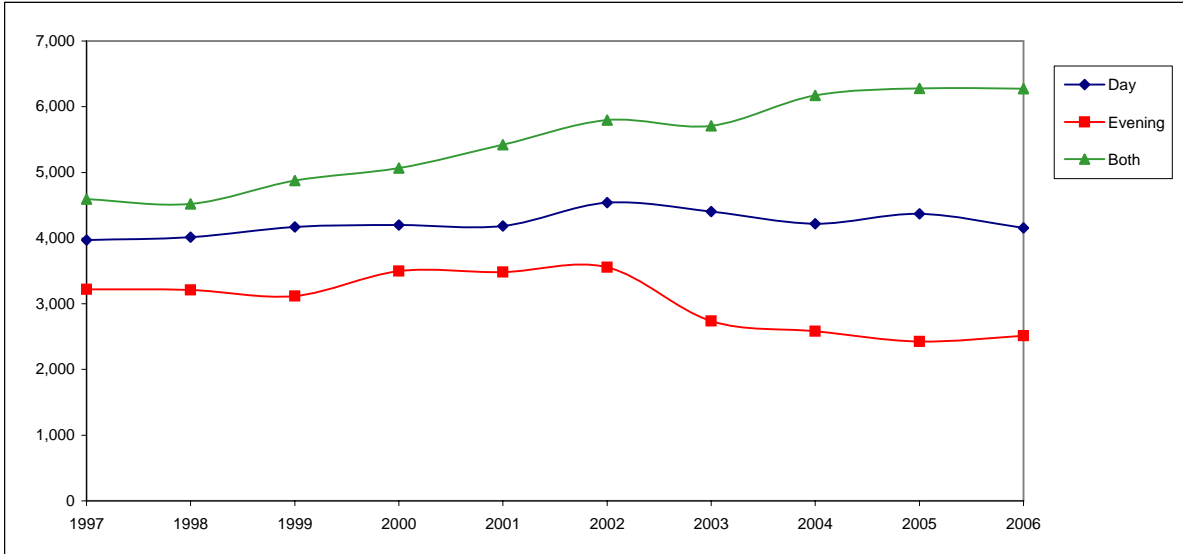
Last updated: 2006/9/18

### GWC Fall Enrollment by Day/Evening

(as of Saturday at the End of the Second Week)

Summary of enrollment by day/evening:

The number of students enrolled in both Day and Evening classes has steadily risen since 1998. Day only student numbers are steady. The number of Evening only students declined significantly in 2003 but has flattened out since.



	1997	1998	1999	2000	2001	2002	2003	2004	2005	2006
Day	33.7%	34.2%	34.3%	32.9%	32.0%	32.7%	34.3%	32.5%	33.4%	32.1%
Evening	27.3%	27.3%	25.6%	27.4%	26.6%	25.6%	21.3%	19.9%	18.5%	19.4%
Both	39.0%	38.5%	40.1%	39.7%	41.4%	41.7%	44.4%	47.6%	48.0%	48.5%
Total	100.0%	100.0%	100.0%	100.0%	100.0%	100.0%	100.0%	100.0%	100.0%	100.0%

	1997	1998	1999	2000	2001	2002	2003	2004	2005	2006
Day	3,972	4,014	4,168	4,201	4,186	4,540	4,404	4,218	4,370	4,155
Evening	3,219	3,209	3,117	3,496	3,484	3,558	2,737	2,581	2,424	2,516
Both	4,596	4,519	4,875	5,065	5,421	5,796	5,709	6,171	6,279	6,273
Total	11,787	11,742	12,160	12,762	13,091	13,894	12,850	12,970	13,073	12,944

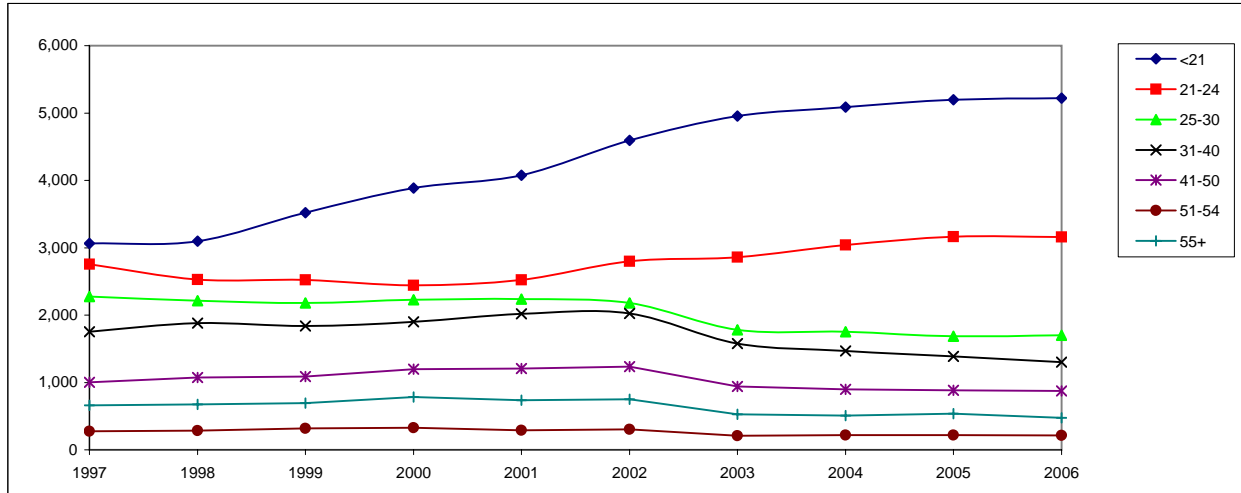
Last updated: 2006/9/18

### GWC Fall Enrollment by Age

(as of Saturday at the End of the Second Week)

**Summary of enrollment by age:**

The number of students 'under the age of 21' declined dramatically between 1996 and 1998. Fortunately, that trend reversed itself after 1998 and has now surpassed the 5,000 level. The number of students '21-24', however, also declined through 2000 but has been on the incline ever since. The number of students in all other age groups was steady until 2002, declined in 2003, and has held steady the last three years.



	1997	1998	1999	2000	2001	2002	2003	2004	2005	2006
<21	26.0%	26.4%	29.0%	30.4%	31.1%	33.1%	38.6%	39.2%	39.8%	40.3%
21-24	23.4%	21.5%	20.8%	19.1%	19.3%	20.2%	22.3%	23.4%	24.2%	24.4%
25-30	19.3%	18.8%	17.9%	17.4%	17.1%	15.7%	13.9%	13.5%	12.9%	13.1%
31-40	14.9%	16.0%	15.1%	14.9%	15.4%	14.6%	12.3%	11.3%	10.6%	10.1%
41-50	8.5%	9.1%	9.0%	9.4%	9.2%	8.9%	7.3%	6.9%	6.7%	6.7%
51-54	2.4%	2.4%	2.6%	2.6%	2.2%	2.2%	1.6%	1.7%	1.7%	1.7%
55+	5.6%	5.7%	5.7%	6.2%	5.6%	5.4%	4.1%	3.9%	4.1%	3.7%
Total	100.0%	100.0%	100.0%	100.0%	100.0%	100.0%	100.0%	100.0%	100.0%	100.0%

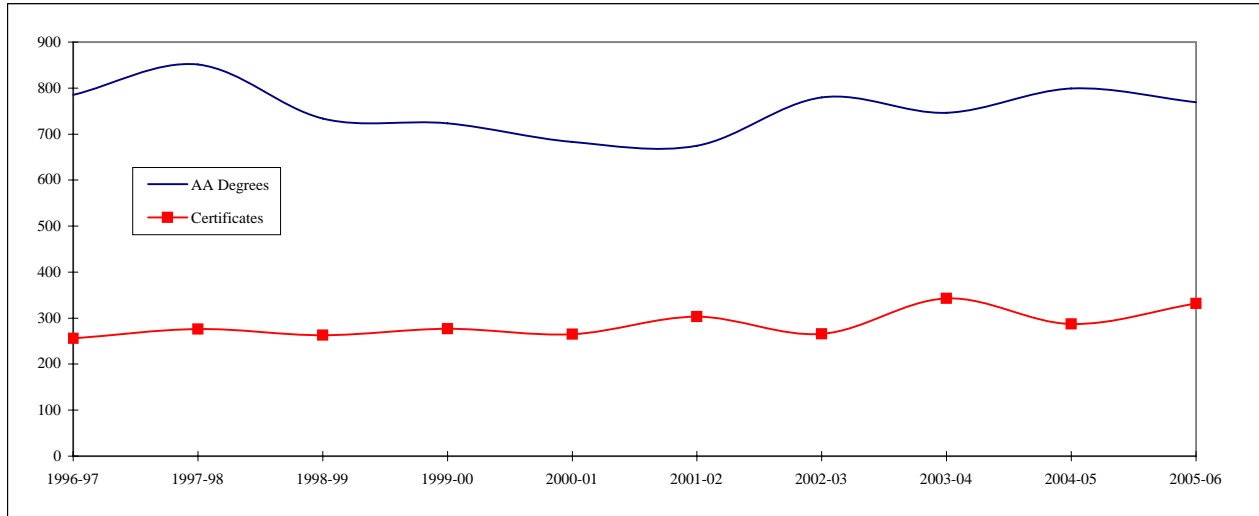
	1997	1998	1999	2000	2001	2002	2003	2004	2005	2006
<21	3,066	3,096	3,521	3,884	4,076	4,593	4,957	5,087	5,199	5,219
21-24	2,753	2,526	2,524	2,442	2,521	2,800	2,862	3,040	3,164	3,160
25-30	2,276	2,212	2,180	2,226	2,238	2,182	1,780	1,751	1,687	1,701
31-40	1,754	1,879	1,837	1,899	2,021	2,025	1,576	1,466	1,389	1,304
41-50	1,003	1,072	1,090	1,196	1,207	1,236	939	897	882	873
51-54	277	284	316	330	290	306	207	219	217	214
55+	658	673	692	785	738	752	529	510	535	473
Total	11,787	11,742	12,160	12,762	13,091	13,894	12,850	12,970	13,073	12,944

Last updated: 2006/9/18

## Degrees and Certificates Awarded

**Summary of degrees/certificates awarded:**

The number of vocation certificates awarded has remained steady the last six years with a slight increase in 2003-04. The number of AA degrees awarded has dropped incrementally since the 1997-98 peak, but rebounded in 2002-03 and again in 2004-05.



	1996-97	1997-98	1998-99	1999-00	2000-01	2001-02	2002-03	2003-04	2004-05	2005-06
AA Degrees	75.4%	75.5%	73.6%	72.3%	72.0%	69.0%	74.6%	68.5%	73.6%	69.8%
Certificates	24.6%	24.5%	26.4%	27.7%	28.0%	31.0%	25.4%	31.5%	26.4%	30.2%
Total	100.0%	100.0%	100.0%	100.0%	100.0%	100.0%	100.0%	100.0%	100.0%	100.0%

	1996-97	1997-98	1998-99	1999-00	2000-01	2001-02	2002-03	2003-04	2004-05	2005-06
AA Degrees	785	851	734	723	683	675	780	746	799	769
Certificates	256	276	263	277	265	303	266	343	287	332
Total	1,041	1,127	997	1,000	948	978	1,046	1,089	1,086	1,101

Note: Counts include students who received both an AA degree and a certificate.

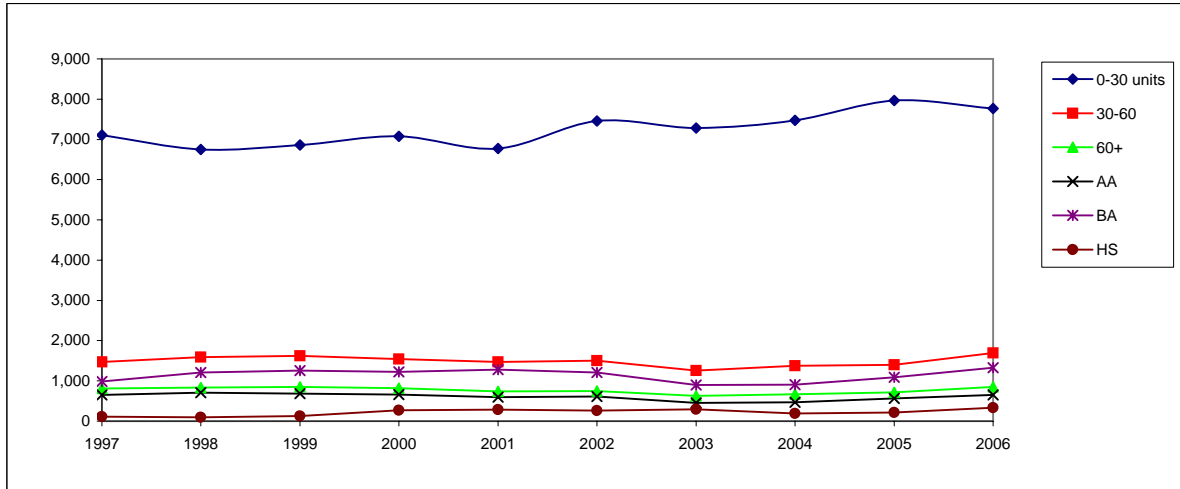
Last updated: 2006/9/18

### GWC Fall Enrollment by Entrance Level

(as of Saturday at the End of the Second Week)

Summary of enrollment by entrance status:

The number of students having completed '30 units or less' has slowly increased since 2000.



	1997	1998	1999	2000	2001	2002	2003	2004	2005	2006
0-30 units	60.3%	57.5%	56.4%	55.5%	51.7%	53.7%	56.7%	57.6%	61.0%	60.0%
30-60	12.5%	13.6%	13.3%	12.1%	11.3%	10.8%	9.8%	10.6%	10.7%	13.1%
60+	6.9%	7.1%	7.0%	6.4%	5.6%	5.4%	4.9%	5.2%	5.5%	6.5%
AA	5.5%	6.0%	5.6%	5.2%	4.6%	4.4%	3.5%	3.6%	4.3%	5.0%
BA	8.4%	10.3%	10.3%	9.6%	9.8%	8.7%	7.0%	7.0%	8.3%	10.2%
HS	0.9%	0.8%	1.1%	2.1%	2.2%	1.9%	2.3%	1.5%	1.7%	2.5%
Other	5.5%	4.7%	6.3%	9.2%	14.8%	15.2%	15.8%	14.5%	8.6%	2.6%
Total	100.0%	100.0%	100.0%	100.0%	100.0%	100.0%	100.0%	100.0%	100.0%	100.0%

	1997	1998	1999	2000	2001	2002	2003	2004	2005	2006
0-30 units	7,106	6,750	6,862	7,077	6,772	7,460	7,281	7,475	7,968	7,768
30-60	1,471	1,593	1,619	1,540	1,474	1,499	1,259	1,376	1,403	1,691
60+	813	831	853	815	739	745	631	670	715	847
AA	652	707	683	662	599	612	450	469	565	650
BA	987	1,208	1,253	1,222	1,280	1,208	899	906	1,087	1,326
HS	108	97	129	269	284	260	296	193	216	330
Other	650	556	761	1,177	1,943	2,110	2,034	1,881	1,119	332
Total	11,787	11,742	12,160	12,762	13,091	13,894	12,850	12,970	13,073	12,944

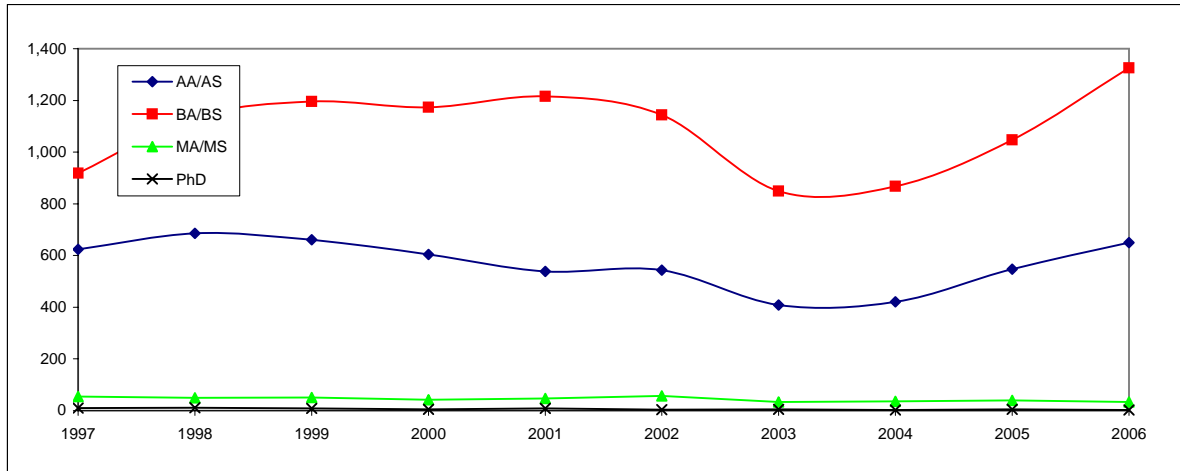
Last updated: 2006/9/18

### GWC Fall Enrollment by Highest Degree Held

(as of Saturday at the End of the Second Week)

Summary of enrollment by degree held at entrance:

Since the 1996 repeal of the \$50/unit fee for students holding a 4-year degree, the number of these students increased until 2001. The number dropped dramatically in 2003 but is now rebounding. The number of students holding AA degrees has steadily decreased since 1998 but is also rebounding.



	1997	1998	1999	2000	2001	2002	2003	2004	2005	2006
AA/AS	5.3%	5.8%	5.4%	4.7%	4.1%	3.9%	3.2%	3.2%	4.2%	5.0%
BA/BS	7.8%	9.7%	9.8%	9.2%	9.3%	8.2%	6.6%	6.7%	8.0%	10.2%
MA/MS	0.5%	0.4%	0.4%	0.3%	0.4%	0.4%	0.3%	0.3%	0.3%	0.3%
PhD	0.1%	0.1%	0.1%	0.0%	0.1%	0.0%	0.0%	0.0%	0.0%	0.0%
None	86.4%	84.0%	84.2%	85.7%	86.2%	87.4%	89.9%	89.8%	87.5%	84.5%
Total	100.0%	100.0%	100.0%	100.0%	100.0%	100.0%	100.0%	100.0%	100.0%	100.0%

	1997	1998	1999	2000	2001	2002	2003	2004	2005	2006
AA/AS	624	686	661	604	539	544	409	421	547	650
BA/BS	919	1,135	1,196	1,173	1,216	1,144	849	868	1,047	1,326
MA/MS	55	50	51	42	47	57	33	36	39	33
PhD	10	11	9	5	9	4	5	3	5	2
None	10,179	9,860	10,243	10,938	11,280	12,145	11,554	11,642	11,435	10,933
Total	11,787	11,742	12,160	12,762	13,091	13,894	12,850	12,970	13,073	12,944

Note: 1993 - Differential fees for BA/BS holders implemented  
 1996 - Differential fees discontinued

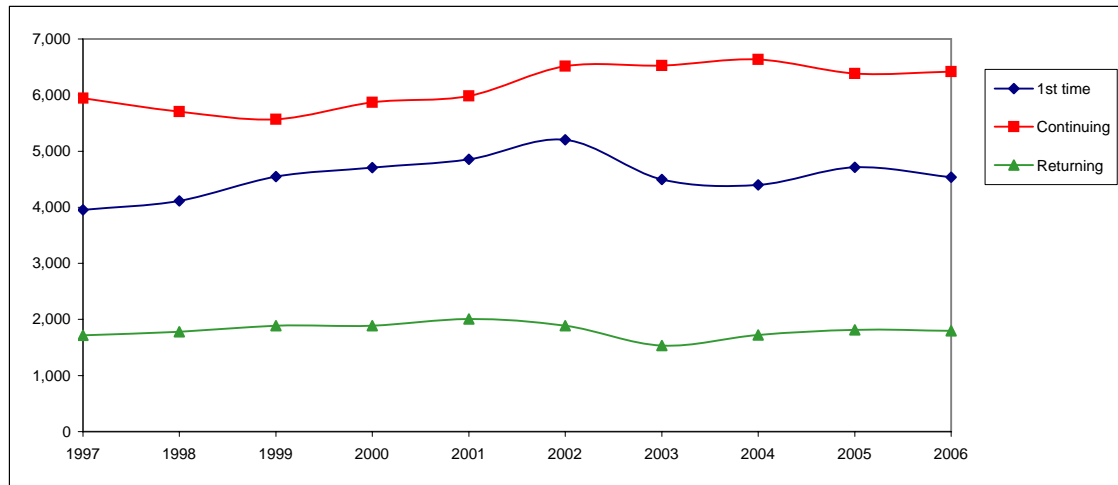
Last updated: 2006/9/18

### GWC Fall Enrollment by Status

(as of Saturday at the End of the Second Week)

**Summary of enrollment by status:**

The number of continuing students declined until 1999, increased until 2004, and once again decreased in 2005. The number of first-time students peaked in 2002, declined until 2004, and increased in 2005. The number of returning students has been relatively steady.



	1997	1998	1999	2000	2001	2002	2003	2004	2005	2006
1st time	33.5%	35.0%	37.4%	36.9%	37.1%	37.5%	35.0%	33.9%	36.1%	35.1%
Continuing	50.4%	48.6%	45.8%	46.0%	45.7%	46.9%	50.8%	51.1%	48.8%	49.6%
Returning	14.6%	15.2%	15.5%	14.8%	15.4%	13.6%	11.9%	13.3%	13.9%	13.9%
1st time trans	0.6%	0.4%	0.1%	0.1%	0.2%	0.1%	0.2%	0.2%	0.2%	0.2%
HS	0.9%	0.8%	1.2%	2.2%	1.6%	1.9%	2.1%	1.5%	1.0%	1.4%
Total	100.0%	100.0%	100.0%	100.0%	100.0%	100.0%	100.0%	100.0%	100.0%	100.0%

	1997	1998	1999	2000	2001	2002	2003	2004	2005	2006
1st time	3,951	4,112	4,548	4,706	4,854	5,205	4,497	4,399	4,715	4,538
Continuing	5,946	5,707	5,567	5,873	5,987	6,514	6,529	6,633	6,383	6,416
Returning	1,720	1,780	1,887	1,888	2,011	1,888	1,532	1,725	1,816	1,795
1st time trans	66	51	17	18	23	20	21	23	23	20
HS	104	92	141	277	216	267	271	190	136	175
Total	11,787	11,742	12,160	12,762	13,091	13,894	12,850	12,970	13,073	12,944

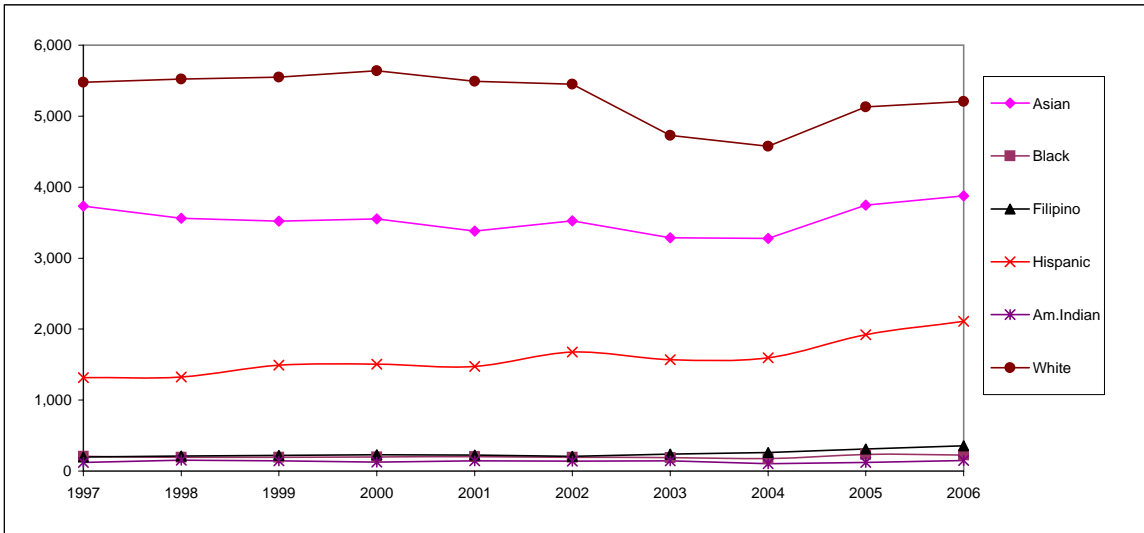
Last updated: 2006/9/18

### GWC Fall Enrollment by Ethnicity

(as of Saturday at the End of the Second Week)

**Summary of enrollment by ethnicity:**

The number of 'white' students was consistent between 1996 and 2002, declined in 2003 and 2004, but increased in 2005. The number of 'Asian' students, on the other hand, decreased between 1996 and 2004 but increased in 2005. A slight increase in the number of 'Hispanic' students has been underway since 1998.



	1997	1998	1999	2000	2001	2002	2003	2004	2005	2006
Am.Indian	1.0%	1.3%	1.2%	1.0%	1.1%	1.0%	1.1%	0.8%	0.9%	1.1%
Asian	31.7%	30.3%	29.0%	27.8%	25.8%	25.5%	25.6%	25.3%	28.7%	29.9%
Black	1.8%	1.7%	1.6%	1.6%	1.5%	1.4%	1.5%	1.4%	1.8%	1.7%
White	46.5%	47.0%	45.6%	44.2%	41.9%	39.4%	36.8%	35.3%	39.2%	40.2%
Hispanic	11.2%	11.3%	12.3%	11.8%	11.3%	12.1%	12.2%	12.3%	14.7%	16.3%
Filipino	1.7%	1.8%	1.8%	1.8%	1.7%	1.5%	1.8%	2.0%	2.4%	2.8%
Other/Unknown	6.2%	6.6%	8.6%	11.8%	16.6%	19.0%	21.0%	23.0%	12.3%	7.9%
<b>Total</b>	<b>100.0%</b>	<b>100.0%</b>	<b>100.0%</b>	<b>100.0%</b>	<b>100.0%</b>	<b>100.0%</b>	<b>100.0%</b>	<b>100.0%</b>	<b>100.0%</b>	<b>100.0%</b>

	1997	1998	1999	2000	2001	2002	2003	2004	2005	2006
Asian	3,731	3,559	3,521	3,550	3,382	3,527	3,284	3,276	3,748	3,876
Black	208	194	192	199	201	194	188	177	233	225
Filipino	198	210	221	230	226	209	237	260	313	357
Hispanic	1,316	1,324	1,491	1,507	1,474	1,675	1,567	1,595	1,921	2,109
Am.Indian	123	153	143	128	142	139	142	104	122	147
White	5,478	5,522	5,548	5,639	5,491	5,448	4,729	4,576	5,130	5,208
Other/Unknown	733	780	1,044	1,509	2,175	2,629	2,703	2,982	1,606	1,022
<b>Total</b>	<b>11,787</b>	<b>11,742</b>	<b>12,160</b>	<b>12,762</b>	<b>13,091</b>	<b>13,821</b>	<b>12,850</b>	<b>12,970</b>	<b>13,073</b>	<b>12,944</b>

Last updated: 2006/9/18